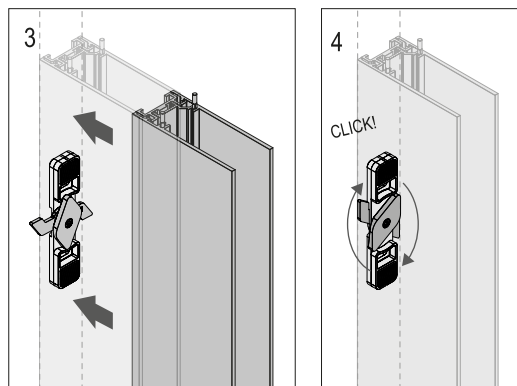
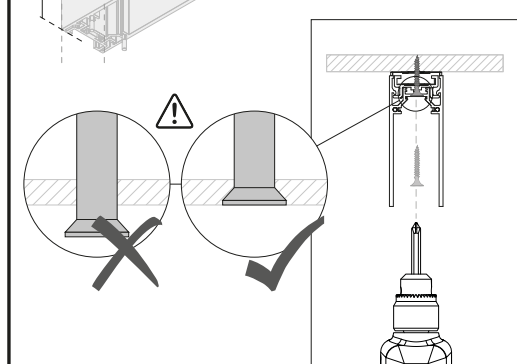
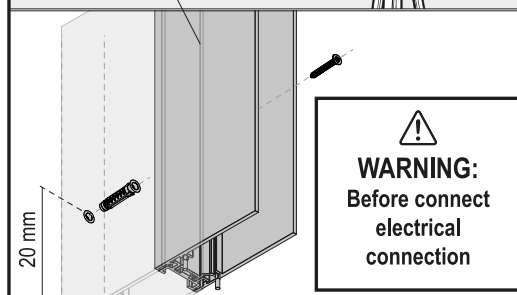
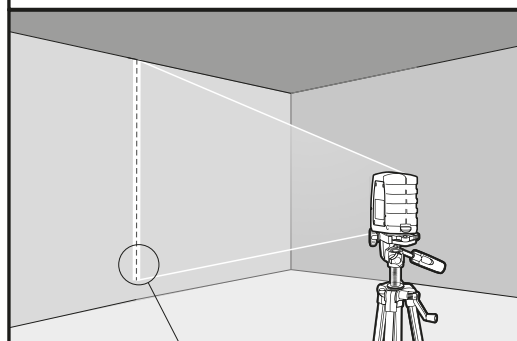


! ONLY VERTICAL INSTALLATION



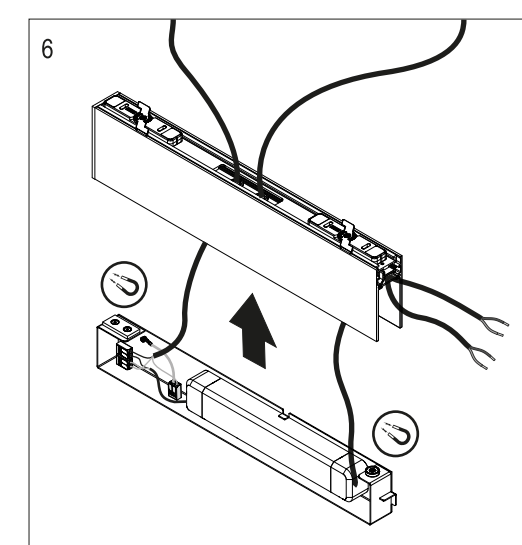
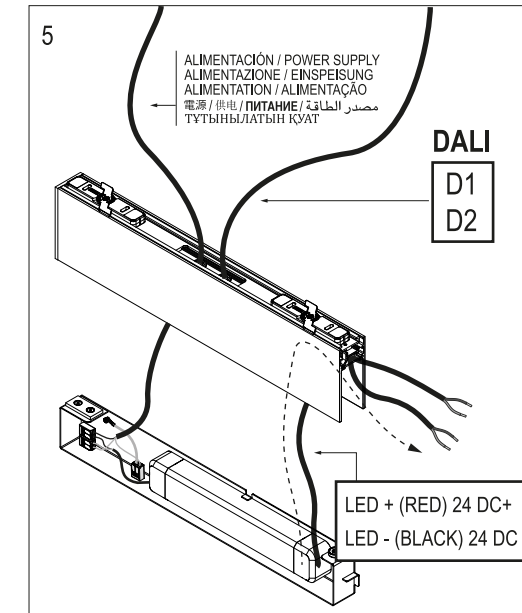
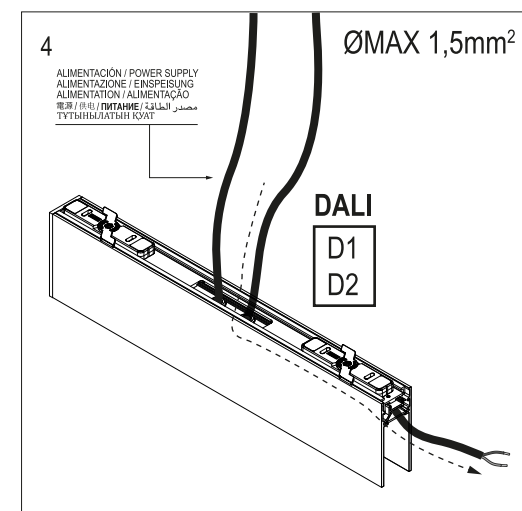
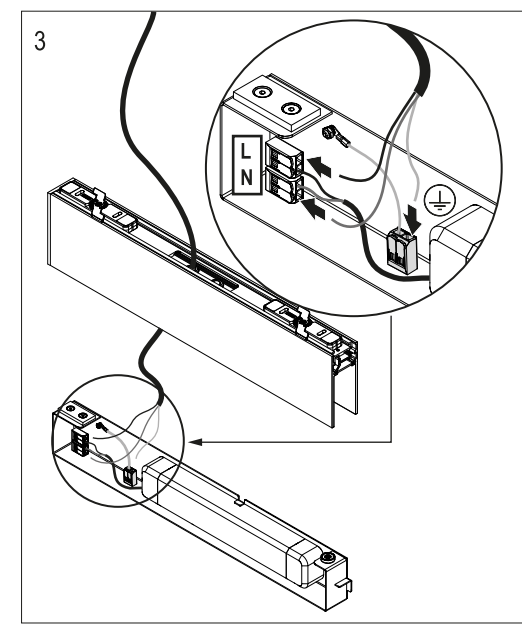
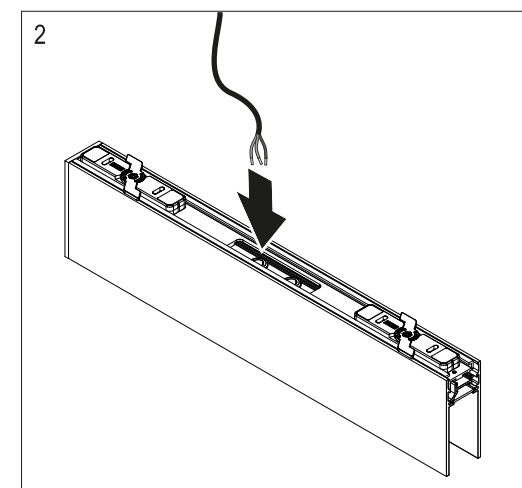
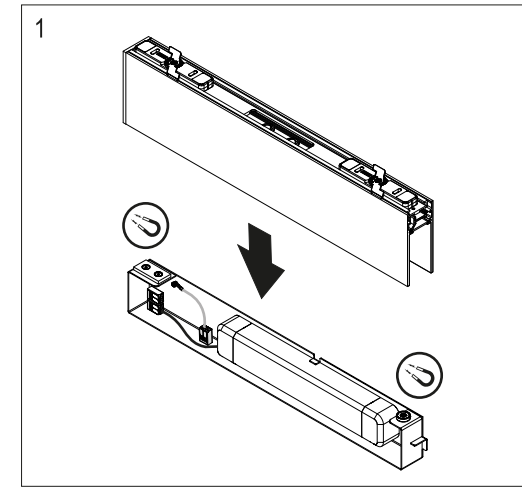
! In order to get a better finish of the track elements, Flos recommends to use a silicon or similar sealing product of the same color of the profiles, to fill up the slight gap that may exist between joined elements.

B ELECTRICAL CONNECTION

CONEXIÓN ELÉCTRICA / CONNESSIONE ELETTRICA / ELEKTRISCHER ANSCHLUSS / CONNEXION ÉLECTRIQUE / LIGAÇÃO ELÉCTRICA / のコネクション / 電力接続 / ЭЛЕКТРИЧЕСКОЕ ПОДКЛЮЧЕНИЕ / ЭЛЕКТРИК БАЙЛАНЫС / التوصيل الكهربائي

! EUR VERSION

DRIVER DATA:
Input Voltage 220-240VAC
Constant voltage 24V 120W / 5A
Protections:
SCP/OLP/OVP/OTP



FEED PROFILE

